

10 December 2014

A meeting of the **HELENSBURGH AND LOMOND COMMUNITY PLANNING GROUP** will be held in the **PILLAR HALL, VICTORIA HALLS, HELENSBURGH** on **TUESDAY, 9 DECEMBER 2014** at **2:00 PM**.

## **AGENDA**

- 1. APOLOGIES**
- 2. DECLARATIONS OF INTEREST**
- 3. MINUTES**  
Helensburgh and Lomond Community Planning Group held on 9 September 2014  
(Pages 1 - 8)
- 4. HIGHLIGHTS FROM THE CPP MANAGEMENT COMMITTEE**  
Report by the Community Planning Manager. (Pages 9 - 10)
- 5. AREA GOVERNANCE REVIEW REPORT - TERMS OF REFERENCE**  
Report by Community Governance Manager. (Pages 11 - 12)
  - (a) ACPG - Terms of Reference (Pages 13 - 18)
  - (b) ACPG - Membership (Pages 19 - 20)
- 6. SOA LOCAL DEVELOPMENT ACTION PLAN PHASE 2 UPDATE**  
Update by Community Governance Manager . (Pages 21 - 38)
- 7. COMMUNITY COUNCIL BY ELECTIONS UPDATE**  
Report by Area Governance Officer. (Pages 39 - 42)
- 8. OUTCOME 6: PEOPLE LIVE IN SAFER AND STRONGER COMMUNITIES**
  - (a) Police Scotland
  - (b) Scottish Fire and Rescue Service
  - (c) Scottish Ambulance
- 9. OUTCOME 2: WE HAVE INFRASTRUCTURE THAT SUPPORTS SUSTAINABLE GROWTH**
  - (b) ACHA



argyll and bute

communityplanningpartnership

Presentation and update by Yvonne Litster, ACHA Regional Manager. (Pages 43 - 56)

- (c) Community Broadband Scotland  
Presentation and update by Development Officer for Community Broadband Scotland (Pages 57 - 72)

**10. OUTCOME 1: IN ARGYLL AND BUTE THE ECONOMY IS DIVERSE AND THRIVING**

- (d) Business Gateway Report  
Report by Business Gateway representative (Pages 73 - 74)
- (e) Loch Lomond and the Trossachs National Park Authority (NPA) - Report  
Report by Neil Black, Community Development Officer, Loch Lomond & The Trossachs National Park  
(Pages 75 - 78)

(c) MOD

(d) SPT

**11. OUTCOME 5: PEOPLE LIVE ACTIVE, HEALTHIER AND INDEPENDENT LIVES**

- (f) Duchess Wood Local Nature Reserve Committee - Highlight Report  
Report by Community Governance Manager (Pages 79 - 80)
- (g) Health and Improvement Team - Mental Wellbeing  
A report by Lorna Crawford, Project Worker (Pages 81 - 86)
- (h) Integration of Health & Social Care  
Report by Joint Project Manager-Integration (Pages 87 - 90)

(d) Argyll Voluntary Action

**12. ISSUES RAISED BY COMMUNITY COUNCILS**

**13. ANY OTHER COMPETENT BUSINESS**

**14. MEETING DATES FOR 2015-2016**

Lorna Elliott Community Governance Manager

Theresa McLetchie – Tel: 01436 657621

**MINUTES of MEETING of HELENSBURGH AND LOMOND COMMUNITY PLANNING GROUP**  
**held in the PILLAR HALL, VICTORIA HALLS, HELENSBURGH**  
**on TUESDAY, 9 SEPTEMBER 2014**

**Present:**

(Chair)  
 Councillor Gary Mulvaney  
 Councillor Maurice Corry  
 Councillor David Kinniburgh  
 Councillor Robert G Macintyre  
 Councillor George Freeman  
 Councillor Aileen Morton

**Attending**

Shirley MacLeod	Area Governance Manager
Lorna Elliot	Community Governance Manager
Samantha Quarton	Community Planning Officer
Audrey Baird	Community Development Officer
Morevain Martin	Argyll Voluntary Action
Charles Mcivor	Technical Officer
Neil Sturrock	SPT
Tony Meechan	Strathclyde Fire and Rescue
Jim Reid	Police Scotland
Tony Davey	Cardross Community Council
John Tacchi	Helensburgh Community Council

**1. APOLOGIES**

Apologies were intimated from:-

Councillor Vivien Dance  
 Councillor Ellen Morton  
 Councillor James Robb  
 Councillor Richard Trail  
 Chief Inspector Gary Stitt  
 Inspector Claire Miller  
 Group Commander Ian Riches

**2. DECLARATIONS OF INTEREST**

Councillor Aileen Morton declared a non-financial interest as Chair of the Duchess Woods Committee in relation to Item 5a Duchess Woods Local Nature Reserve Committee highlight/exception report and Mr John Tacchi declared a non-financial interest in relation to Item 6c Amenity Services – Community Consultation.

Due to the other commitments of Partners, it was agreed that Agenda Item 9 (a) Police Scotland would be taken first.

The Chair announced to the group that Group Commander Eddie Renfrew, Scottish Fire and Rescue had retired. He wished it noted in the

Minute the excellent service provision and attendance at CPG meetings undertaken by Group Commander Renfrew. The Chair proposed that a letter of thanks and recognition be sent on behalf of the Helensburgh and Lomond CPG and this was unanimously agreed.

### **Decision:**

The Community Governance Manager would write a letter of thanks to Group Commander Renfrew.

### **3. MINUTES OF PREVIOUS HELENSBURGH AND LOMOND COMMUNITY PLANNING GROUP MEETING - 10/06/2014**

The Minute of the Meeting of Helensburgh and Lomond Area Community Planning Group, 10 June 2014 was approved as a correct record, subject to the following amendment:-

Page 6, Item 13 – Items Raised by Community Councils

Mr Davey advised of an Ecumenical Service which had been scheduled to take place on 3 August marking the 100 year marking the 100 year Commencement of Hostilities and on the 4 August there had been an Act of Commemoration.

### **4. POLICE SCOTLAND**

Sergeant Jim Reid provided a short update to the group in regards the public consultation on Multi-Member Ward plan. He reported that the mobile police van was back in the area and this information had been disseminated to the public by the local media.

He continued that the Road Policing unit had been restructured and the number of Road Traffic Accidents (RTAs) had fallen. The meetings of the Multi-Agency Road Safety group were scheduled every 3 months and proving successful.

Sergeant Reid informed the group that the Public Procession of the County Grand Lodge of Ayrshire, Renfrewshire and Argyll passed without incident. There were 25 fixed penalties issued for drinking and urinating during the course of the day and 3 people were arrested.

Figures for both anti-social behaviour and violent crime were down. He advised that local resources had been utilised during the Commonwealth Games, and he highlighted the overall success of the Games.

The forthcoming Referendum would also require considerable resourcing being mindful of tensions within local communities.

Sergeant Reid highlighted a forthcoming event – Don't be a Victim – scheduled for Friday, 12 September between 10a.m. and 2.00p.m. in the Victoria Halls, Helensburgh.

Discussion followed and Sergeant Reid confirmed that the mobile office was a shared resource between Helensburgh and Lomond and Bute and Cowal. Councillor Kinniburgh commended the way that Police Scotland had managed the Traffic Plan on the day of the Orange Walk in Helensburgh.

The Chair thanked Sergeant Reid for attending the meeting and providing

an informative update for the group.

**5. AREA GOVERNANCE REVIEW REPORT**

The group gave consideration to a report regarding the governance issues pertaining to the Area Community Planning Groups.

**(a) AREA COMMUNITY PLANNING GROUP - TERMS OF REFERENCE**

The group gave consideration to the draft Terms of Reference pertaining to the Area Community Planning Groups.

The Area Governance Manager advised the group of the timescales for the submission of comments.

The Chair requested that the group address this issue and endeavour to get adequate Ward representation.

Discussion followed in regards local community councils and their perception of not being fully included and the need for cognisance in regards the diverse issues of rural and urban community councils. The Chair urged the group to review and give consideration to issues which had been raised during the discussion. He also questioned the lack of representation from the private sector and hoped this would also be addressed. He continued that partners should feedback comments to – Lorna Elliott, Community Governance Manager – by 30 September.

The Area Governance Manager confirmed that the draft Terms of Reference would be disseminated to all the local Community Councils for their information with a request that any comments by submitted by 30 September 2014.

(Reference: Report by Head of Community and Culture, dated 9 September 2014, submitted)

**(b) SOA LOCALISED DELIVERY**

The group gave consideration to the localised SOA delivery.

Discussion followed and it was confirmed that all local Community Councils would be written to individually and it was hoped to convene a local workshop in Helensburgh and Lomond.

The group agreed to note the phased approach localised SOA delivery and associated timetable.

**6. OUTCOME 1: IN ARGYLL AND BUTE THE ECONOMY IS DIVERSE AND THRIVING**

(a) **HIGHLIGHT REPORT - DUCHESS WOOD LOCAL NATURE RESERVE COMMITTEE**

The group noted the report which outlined recent activity by the Committee.

(Ref: Report by Area Governance Manager, Customer Services, dated September 2014, submitted.)

(b) **LOCH LOMOND AND THE TROSSACHS NATIONAL PARK**

The group considered a short report in regards to the Loch Lomond and the Trossachs National Park Authority (NPA)

(Ref: Report by Loch Lomond and the Trossachs National Park Authority (NPA), dated 9 September 2014, submitted.)

(c) **MOD**

Commander Riches had intimated his apologies and therefore there was no update on recent events within the MOD.

7. **OUTCOME 2: WE HAVE INFRASTRUCTURE THAT SUPPORTS SUSTAINABLE GROWTH**

(a) **SCOTTISH WATER**

There was no representation from Scottish Water.

The Chair requested that a letter be sent to Joanna Peebles, Regional Community Manager requesting an update on water issues in the local area and attendance at future meetings of the group.

**Decision:**

The Community Governance Manager to write to Joanna Peebles.

(b) **SPT**

The group heard an update from Neil Sturrock on Argyll and Bute Transport Outcomes Report for 2014/2015.

Discussion continued in regards on-going issues in the Craigendoran area 'Park and Ride' proposal and Mr Sturrock affirmed that there were land ownership issues which were delaying progress. He continued that Council officers were leading on this and further information could be requested from them. The issue of bus stops being moved in Helensburgh Town centre was highlighted and the resulting confusion which had arisen from this. The Chair reiterated the need for SPT to monitor this and establish why this had occurred. Further discussion was given to the implementation of use of the smart card on buses and ferries. Mr Sturrock assured the group that he would update them on progress.

He continued that a new rail franchise was commencing in April 2015 and this would present opportunities to engage in potential new services. The possibility of disabled veterans being awarded free

travel was also raised.

The group agreed to note the report.

(Reference: Report by Neil Sturrock, Senior Transport Planner, Strathclyde for Transport)

**(c) AMENITY SERVICES - COMMUNITY CONSULTATION**

The group heard a presentation by the Technical Officer in regards to the Amenity Services Budget savings.

The Streetscene operation was commended by Mr Casey, Cardross Community Council who related recent operations they had undertaken in the area. The group gave further discussion in regards the need for effective street cleaning machinery in the area.

The group agreed:-

1. To note the presentation.
2. That the Technical Officers would investigate the implementation of effective street cleaning machinery for the Town Centre area

**8. OUTCOME 4: CHILDREN HAVE THE BEST POSSIBLE START**

**(a) KIRKMICHAEL COMMONWEALTH FAMILY FUN & SPORTS DAY**

The group gave consideration to a report in regards to the Kirkmichael Commonwealth Family Fun and Sports Day.

Discussion followed and the group gave consideration to the best possible way to support the event. It was suggested that this presented opportunities for local partners to be more involved. The Chair highlighted the need for a framework which covered all areas of Argyll and Bute.

The group agreed:-

1. To note the report.
2. That this issue would be included in the localised SOA delivery plan.

(Reference: Report by the Community Development Manager, dated 19 August 2014, submitted).

**9. OUTCOME 5: PEOPLE LIVE ACTIVE, HEALTHIER AND INDEPENDENT LIVES**

**(a) ARGYLL VOLUNTARY ACTION**

Morevain Martin provided an update in regards to the recent training and events within the area. She advised that £9,000 had recently been awarded to local organisations from the Health and Wellbeing Fund. A recent initiative had seen young carers in work placements.

Mrs Martin highlighted that the Helensburgh and Lomond food bank, a new project, would be operational on 4 November and gave thanks to the Red Cross for their offer of free accommodation.

She continued to update the group on training workshops – Committee skills for voluntary organisations and various groups in the local area. These included – a group to support families in crisis and a young carers support group.

Mrs Martin highlighted a forthcoming event which would be held in the Tower.

The Chair thanked Ms Martin for her informative update.

The group noted the update.

## **10. OUTCOME 6: PEOPLE LIVE IN SAFER AND STRONGER COMMUNITIES**

### **(a) SCOTTISH FIRE AND RESCUE SERVICE**

The group were given an update by Tony Meechan and he advised that he would pass on the group's thanks to Group Commander Eddie Renfrew.

He continued that he did not have the detail of a replacement, but was hopeful this would be implemented by December. Mr Meechan advised on an increase in operational incidents, but stressed these were in the main false alarms. He detailed an increase in home visits and installation of fire alarms.

The Summer strategy had completed and the Service were about to implement Electrical Safety and Bonfire Safety. He reported on 3 local events – Road Safety with pupils from Hermitage Academy; Visitors awareness and also Holiday/Country safety.

The Chair thanked Mr Meechan for his informative update.

The group noted the update.

### **(b) SCOTTISH AMBULANCE**

As there was no representation, there was no update from the Scottish Ambulance Service.

### **(c) HELENSBURGH AND LOMOND COMMUNITY SAFETY FORUM**

The Area Governance Manager advised that a recent meeting had been postponed and discussion was taking place to source the best means of incorporating community safety into the local area SOA delivery plan.

## **11. ISSUES RAISED BY THIRD SECTOR PARTNERSHIPS**

Morevain Martin, Argyll Voluntary Action advised the group that funding for 'Reshaping Care' would cease at the end of the current financial year.



She highlighted the difficulties small organisations would have with bidding issues and stated that, in her opinion, this would be an excellent time and opportunity for these organisations to engage with the local Community Planning group.

The group noted the update.

**12. ISSUES RAISED BY COMMUNITY COUNCILS**

There were none raised.

**13. ANY OTHER COMPETENT BUSINESS**

The Area Governance Manager circulated a report from the recent Community Planning Management Committee meeting and highlighted that there would be regular reports forthcoming from the Community Planning Management Committee to Area Community Planning Groups.

It was also noted that the Area Community Planning Groups would continue to provide regular information to the Management Committee as part of a wider communication strategy.

**14. DATE OF NEXT MEETING**

The next meeting of the Helensburgh and Lomond Community Planning Group will take place on Tuesday 9<sup>th</sup> December 2014 at 2.00pm within the Pillar Hall, Victoria Halls, Helensburgh.

This page is intentionally left blank



These are the highlights from the Argyll and Bute Community Planning Partnership Management Committee meeting on the 31<sup>st</sup> October 2014. These highlights are for information purposes for Area Community Planning Groups and can be shared with the communities that members of the Area Community Planning Group represent.

Highlights of the CPP Management Committee meeting on 31<sup>st</sup> October 2014.

- It was agreed that the delivery plans of the Single Outcome Agreement are now not subject to further changes for a period of approximately 12 months to ensure stability.
- The Management Committee agreed that two out of the six outcomes that make up the SOA would be scrutinised at each Management Committee and that Outcome 2: We have infrastructure that supports sustainable growth and Outcome 6: People live in safer and stronger communities would be scrutinised in March 2015 with Outcome 3: Education, skills and training maximises opportunities for all and Outcome 4: Children and Young people have the best possible start being scrutinised in June 2015 before the Full Partnership meets to review all outcomes in August 2015. This timetable ensures that the progress of each outcome is monitored and scrutinised effectively by the Management Committee and will also enable any exceptions within other outcomes to be discussed when required.
- Machrihanish Airbase Community Company gave an interesting and informative presentation about the company and their plans for the future. It was suggested that the MAKI Area Community Planning Group may also wish to receive a similar presentation.
- Progress on Outcome 1: The economy is diverse and thriving, was monitored and scrutinised. It was positively noted that unemployment had reduced over the last 12 months with 170 more people now in work, and that overall business confidence remains steady.
- It was agreed that the Economic Summit held on 29<sup>th</sup> October was a positive event and the Argyll and Bute Sustainable Economic Forum will have close links with the CPP moving forward.
- Progress on Outcome 5: People live active, healthier and independent lives, was monitored and scrutinised. It was noted that the work to deliver the new Health and Social Care Partnership is now well underway with activity across 11 work streams. It was brought to partners' attention that those who deliver the Universal Support Delivered Locally (USDL) are seeking to broaden referrals from a wider range of Community Planning Partners, particularly to include registered local landlords, NHS and ABCAB.
- The key points of the Director of Public Health's Annual Report were discussed looking at Health and its correlation with the environment and in particular climate change. It was noted that a higher percentage of households within Highland and Argyll and Bute are described as "fuel poor" compared to Scotland as a whole.
- An update was given on the progress of Health and Social Integration and it was suggested that similar updates be presented to each Area Community Planning Group.

- The strategic Governance review of the CPP with refined role, remit and membership of groups was approved.
- The Terms of Reference for the Area Community Planning Groups which incorporated the requested changes made from the Groups were approved.
- Highlights from the Area Community Planning Groups were noted. Attendance of CPP partners at the Area Community Planning Groups was encouraged. Particular note was made of the ACUMEN group who presented to the MAKI Area Group on mental health issues and appreciated knowing of their work. Scottish Fire and Rescue commented that they may contact the ACUMEN group for potential partnership working.
- A plan for a Communications Strategy was approved with the approach of answering the question “what does community planning mean for me?”

---

**Argyll and Bute Community Planning Partnership****Helensburgh & Lomond  
Area Community Planning Group****9th December 2014****Agenda Item [for office use]**

---

**Area Community Planning Group Terms of Reference and Membership Review - update**

---

**1. Purpose**

1.1 The purpose of this report is to give an update on the progress of the current Area Community Planning Group (Area CPG) Terms of Reference (TOR) and Membership Review

**2. Recommendations**

2.1 Area CPG members are requested to:

- Note that the review process is in its final stage and that the revised governance arrangements are expected to come into force during the March 15 round of meetings.
- Consider issuing invitations to join the Area CPG to all the organisations listed in the proposed initial membership list

**3. Background**

3.1 The Area CPG Governance arrangements have been under review since July 2014. This review process has now reached its final stage.

**4. Detail**

4.1 The draft TOR, including the comments made by the Area CPGs during the September round of meetings, was approved by the CPP Management Committee on the 31<sup>st</sup> of October 2014. A copy of the approved draft has been included as supplementary information.

4.2 The updated TOR will be considered by the Argyll & Bute Policy & Resources Committee on the 18th of December with a view to the revised governance arrangements coming into force during the March 15 round of meetings

4.3 In anticipation of this, it will be necessary to review the membership of the group to comply with the new criteria regarding membership.

4.5 A list of the proposed initial membership of the group has been included as supplementary information.

4.6 The organisations listed will need to be asked to nominate representatives to sit on the Area CPG.

4.7 It should be noted that membership will continue to be reviewed on a regular basis by the Area CPG and there is provision for additional organisations to join the group at a later date to accommodate local circumstances.

## **5. Conclusions**

5.1 The review process is nearly complete and the final action the Area CPG needs to take is to invite the organisations listed in proposed initial membership list to nominate representatives to sit on the Area CPG

## **6.0 SOA Outcomes**

Not applicable. The report relates to the administration of the Area CPG.

### **Name of Lead Officer**

Donald MacVicar, Head of Community and Culture

### **For further information please contact:**

Lorna Elliott, Community Governance Manager, Argyll & Bute Council

**Tel** 01631 567995

### **Supplementary Papers**

- Proposed Initial Membership List
- Area Community Planning Groups draft terms of reference

**Agenda Item 5 Area Community Planning Group - Terms of Reference****Argyll and Bute Community Planning Partnership****Terms of Reference: Helensburgh and Lomond Area Community Planning Group**

The Helensburgh and Lomond Area Community Planning Group is a sub group of the Argyll and Bute Community Planning Partnership

It is an unincorporated partnership of agencies and organisations with membership drawn from the public sector, third sector, private sector, community organisations and partnerships that have an interest in Helensburgh and Lomond Area Community Planning Group.

**Purpose**

Argyll & Bute is a large and diverse area. Communities inevitably have different issues even within the overall umbrella of a community plan for the whole area.

Area Community Planning Groups are the vehicle to ensure that there is effective community planning delivery at a local level by:

- Acting on behalf of the Full Community Planning Partnership via the Management Committee to oversee the implementation of Localised Delivery Plans which contribute to the delivery of the Single Outcome Agreement /Community Plan
- Acting on behalf of the community to ensure that local concerns and priorities are highlighted to the Full Community Planning Partnership via the Management Committee.

**Role**

The role of the [insert name] Area Community Planning Group is to:

- Oversee the implementation of the Localised Delivery Plan for [insert area name]
- Encourage effective working across community planning partners at an area level
- Act as a conduit to ensure that local priorities are met and local issues addressed

**Remit**

The Helensburgh and Lomond Area Community Planning Group has the authority to:

- contribute to the development of a Localised Delivery Plan for [insert name]
- monitor progress of the Localised Delivery Plan with regard to the agreed outcomes on what is being done within [insert name]
- provide the scrutiny role for the Full Community Planning Partnership within Helensburgh and Lomond Area.
- consider regular performance monitoring reports and provide information to the Argyll & Bute Community Planning Partnership Management Committee by submitting written reports. A nominated member may also attend a meeting with prior agreement from the chair to provide additional information should a specific issue of concern to the group be scheduled as an agenda item

- form short term working groups to undertake defined pieces of work as required by the group
- engage with communities within the Helensburgh and Lomond Area to understand their needs and requirements
- inform and consult on issues relating to Community Planning at an area level
- contribute to an annual report on progress on the agreed outcomes

### **Short Term Working Groups**

Short Term Working Groups initiated by the Helensburgh and Lomond Area Community Planning Group must:

- be approved at a meeting of the Helensburgh and Lomond Area Community Planning Group and its purpose recorded in the minute of the meeting
- have a named member of the Helensburgh and Lomond Area Community Planning Group acting as lead officer for the group
- have a list of members of the group agreed at inception
- have a clear objective agreed at inception
- have a clear remit agreed at inception
- have a clear output agreed at inception
- have a clear start and end date agreed at inception
- have an appropriate source of administrative support identified and agreed at inception
- have an appropriate funding package identified at inception where relevant and a named member of the short term working group undertaking financial responsibility for the initiative
- provide regular reports of activity and progress to the Helensburgh and Lomond Area Community Planning Group
- any changes to the above must be approved by the Helensburgh and Lomond Area Community Planning Group and recorded in the minute of the meeting

### **EQUAL OPPORTUNITIES**

The [insert name] Area Community Planning Group will seek to ensure that promotion of equal opportunities is central to its on-going activities

### **Criteria for Membership**

- Membership is drawn from public sector, third sector, private sector, community organisations and partnerships operating within the Helensburgh and Lomond Area.
- Membership is open to all organisations public sector, third sector, private sector, community organisations and partnerships operating within the Helensburgh and Lomond Area with an interest in at least one of the six outcome areas of activity identified in Argyll and Bute Community Planning Partnership's Single Outcome Agreement (SOA).
- Organisations can self-nominate, be invited to join or have a statutory obligation to participate.



- In order to ensure democratic accountability, the Chair and Vice Chair from the Argyll & Bute Council Helensburgh and Lomond Area Committee and one other Elected Member from an Argyll & Bute Council Helensburgh and Lomond Area Committee Ward not already represented by the Chair or Vice Chair will sit as members of the group.
- In order to ensure democratic accountability, community councils situated within the Helensburgh and Lomond Area will sit as a member of the group. Subject to local needs, this may be individual community councils, or by way of a caucus arrangement agreed by the community councils situated within the Helensburgh and Lomond area, or alternatively one community council representing all of the community councils on a rotational basis. The community council undertaking this role will be nominated by the other community councils within the area on an annual basis or more frequently if agreed locally.
- In order to comply with legislation which governs community planning in Scotland, some organisations have a statutory obligation to participate in community planning. The organisation will nominate the most appropriate person within their organisation to sit as a member of the group.
- In order to reflect the needs of the community and range of activities covered by the Localised Delivery Plan, other organisations and partnerships operating within the local area are also able to sit as members of the group.
- In order to obtain a balanced representation of the above and to ensure a community focussed approach, a ratio of no more than 50% public sector membership should be maintained throughout the lifetime of the group.
- The representatives ought to be able to speak on behalf of their organisation and where appropriate commit funding and other resources to local partnership activity.
- Membership should reflect the needs of the community and can therefore change subject to approval by a simple majority vote of the other members of the group.

## **Role of Members**

Helensburgh and Lomond Area Community Planning Group members have the following responsibilities:

- To attend the scheduled Helensburgh and Lomond Area Community Planning Group meetings.
- Consistency in attendance by members is necessary to build momentum and progress the activities of the group. Members will be encouraged to appoint substitutes to attend meetings on their behalf if they are unable to attend.
- To communicate information relating to the Helensburgh and Lomond Area Community Planning Group with other members and officers within their own organisation and other organisations operating within the area of activity they represent.

- To communicate information relating to their organisations area of activity to other members of the Helensburgh and Lomond Area Community Planning Group at meetings.
- To raise community planning related issues (that is issues related to Argyll and Bute Community Planning Partnership's SOA) on behalf of the community at Helensburgh and Lomond Area Community Planning Group meetings.
- To contribute to the development, on-going monitoring and review of the Helensburgh and Lomond Area Community Planning Group SOA Local Plan.
- To participate in short term working groups as required.

## Meetings

### Chair

- The Chair and Vice Chair of the Helensburgh and Lomond Area Community Planning Group will be elected by the members of the group and will be appointed for a period of two years.
- Nominations for the Chair and Vice Chair positions will be proposed and seconded by Helensburgh and Lomond Area Community Planning Group members. Each member will have one vote and a simple majority vote will determine the outcome of the election process.
- The elected Chair, or in their absence, the Vice-Chair shall preside over the meeting. If both are absent, partners will choose a member from the floor to preside.
- Members should respect the authority of the Chair who will decide matters of order, competency, relevancy and urgency.

### Quorum

- The quorum for a meeting will be 5.
- If a quorum is not present within 10 minutes of the scheduled start of a meeting or if at any point after a meeting has commenced attendance falls below the quorum the meeting will be declared inquorate.
- If a quorum is not present, at the Chairperson's / Vice-Chairperson's discretion, the meeting shall proceed and any decisions taken will be homologated at the next meeting.
- For purposes of the quorum, participation of partners by video-conferencing or telephone conference links will be considered as present.

### Frequency of Meetings

- The Area Community Planning Groups of the CPP will normally meet once each quarter (4 times each year).
- These meetings will normally be in March, June, September and December.
- Where business requires, further meetings can be called with agreement of the Chair subject to the required notice being given.

### Conduct of Meetings

- Meetings of the Helensburgh and Lomond Area Community Planning Group will be held in public.
- Observers can only participate in discussion with the agreement of Chair.
- Members must declare any conflict of interests at the start of a meeting and take no part in the consideration of the relevant item.
- Observers wishing to participate in discussion must declare any interest in the subject under discussion.

- All meetings will be minuted and a minute made available through the Council's website and available from a link through the community planning partnership website.
- Meetings of the Area Community Planning Groups will be conducted in accordance with the lead partner's (Argyll & Bute Council) standing orders for meetings subject to any necessary changes as set out above (mutatis mutandis).

## **Decision making**

- All members of the group have equal status
- Each member has one vote
- The Chair retains the casting vote
- All decisions must be clearly minuted with a brief summary of the discussion and reason for decision recorded as well as the outcome
- The minutes should clearly record who or whatever organisation is responsible for action
- Observers and persons attending the meeting in an advisory capacity may provide information but are not part of the decision making process and are not able to participate in a vote

## **Accountability**

The Helensburgh and Lomond Area Community Planning Group [is an integral part of Community Planning in Argyll & Bute and is accountable to the following bodies:

- Full Community Planning Partnership via the Management Committee
- Community within its local area
- Argyll & Bute Council as lead partner of Community Planning.

## **Support**

The Helensburgh and Lomond Area Community Planning Group will be supported by:

- A Lead Officer, Argyll and Bute Council Community Governance Manager, to facilitate and promote the smooth operation of the group and work closely with group members to ensure a supportive structure, which responds to the needs of the members in addressing issues.
- Administrative support, organising meetings, taking minutes and associated administrative support will be provided by Argyll and Bute Council, Governance & Law.
- A Local Community Development Officer will have a key role, working in partnership with organisations in the support of community groups, organisations and individuals, particularly those who do not traditionally engage in community issues, to participate in local community planning.

## **Issue of Papers**

- The agenda and papers for the Helensburgh and Lomond Area Community Planning Group will normally be issued 14 days prior to the date of the meeting.
- The Chair can agree to accept late papers.
- The draft Agenda detail will normally be circulated four weeks in advance to allow members to propose items for inclusion
- The agenda and papers will be published on the Argyll & Bute Community Planning Partnership website, the Argyll & Bute Council website and available from a link through the community planning partnership website.

## **Communications**

The Helensburgh and Lomond Area Community Planning Group is an integral part of Community Planning in Argyll & Bute and will follow the guidance set out for Area Community Planning Groups within Argyll & Bute Community Planning Partnership's Communication Strategy.

## **Winding Up**

The Helensburgh and Lomond Area Community Planning Group is a sub group of the Argyll and Bute Community Planning Partnership.

- If the Argyll & Bute Community Partnership is dissolved, the [insert name] Area Community Planning Group will cease to exist by default
- If a review of Argyll and Bute Community Planning Partnership delivery structure should recommend that Area Community Planning Groups should be dissolved to facilitate a new delivery structure, the decision whether or not to wind up the group will be made by the Argyll & Bute Community Planning Partnership following consultation with the Area Community Planning Groups and Argyll & Bute Council as lead partner for community planning within the area.
- Area Community Planning Group members may initiate a proposed wind up of the group by submitting a report outlining the reasons why it was felt the group was no longer required to the Management Committee in the first instance. The decision whether or not to wind up the group will be made by the Argyll & Bute Community Planning Partnership following consultation with Argyll & Bute Council as lead partner for community planning within the area

Approved and adopted at the Helensburgh and Lomond Area Community Planning Group meeting held on 9 December 2014.

Helensburgh & Lomond Area Community Planning Partnership Membership

<b>Member Organisation for voting purposes</b>	<b>Sector</b>	<b>Local Representative/ organisations sitting on the Area CPG</b>	<b>Main SOA Outcome area of activity</b>
Argyll & Bute Council	Public	Area Committee Chair	All 6 Outcomes
		Area Committee Vice Chair	
		Elected Member	
Caucus Community Councils	Community	Drawn for the following Community Councils Rhu & Shandon, Garelochhead, Cove & Kilcreggan, Arrochar & Tarbet, Rosneath & Clynder Luss and Arden, Helensburgh, Cardross	All 6 Outcomes
Police Scotland	Public	Representative	Outcome 6
Scottish Fire & Rescue	Public	Representative	Outcome 6
NHS Highland	Public	Representative	Outcome 5
Loch Lomond & Trossachs National Park	Public	Representative	All 6 Outcomes
Ministry of Defence	Public	Representative	All 6 Outcomes
Strathclyde Passenger Transport	Public	Representative	Outcome 2
Scottish Enterprise	Public	Representative	Outcome 1
Argyll Voluntary Action	Third	Representative	Outcome 3,4,5,6
Argyll & Bute Social Enterprise Network	Third	Representative	Outcome 1 & 2
Registered Social Landlord	Third	ACHA	Outcome 2
		Dunbritton	
Chamber of Commerce	Private	Representative	Outcome 1 & 2
Health & Wellbeing Network	Third	Network Helensburgh	Outcome 5
Argyll & the Islands Strategic Tourism Partnership	Private	Loch Lomond and the Clyde Sealochs Development Agent	Outcome 1 & 2
Caucus Community Development Trusts	Third	To be developed	All 6 Outcomes

Total 16 (10%)    Public Sector 8 (50%)    Third Sector 5 (31%)    Private Sector 2 (13%)    Community 1 (6%)

This page is intentionally left blank

---

**Argyll and Bute Community Planning  
Partnership**

**Helensburgh and Lomond  
Area Community Planning Group**

**Tuesday 9 December 2104**

**Agenda Item [for office use]**

---



---

**SOA Local Development Action Plan Phase 2 Update**

---

**1. Purpose**

1.1 The purpose of the report is to update Area Community Planning Group members on progress relating to the development of the SOA Local: Helensburgh & Lomond

**2. Recommendations**

The Area Community Planning Group is requested to:

2.1 note the findings of the focus group

2.2 consider nominating members to participate in the working group which will take forward the development of the SOA Local: Helensburgh & Lomond

**3. Background**

3.1 Community Planning in Argyll and Bute needed to have a local focus. The Action Plan considered at the September Area CPG meeting set out the approach that is being taken to developing the SOA Local: Helensburgh & Lomond

3.2 The Action Plan is split into phases

- Phase 1 – preparation
- Phase 2 – mapping existing activity
- Phase 3 – development

**4. Detail**

4.1 A focus group was held at the Pillar Hall, Victoria Halls, Helensburgh 14:00-16:30 on Thursday 6 November and was attended by CPP partners and representatives from business and community organisations,

including Helensburgh Chamber of Commerce and Argyll Voluntary Action.

4.2 The purpose of the focus group was to:

- Review the priorities and overall conclusions in the local *Argyll & Bute: A Good Place to Live, Work and Play?* Report.
- Review the mapping of actions in the SOA Delivery Plan against the topics highlighted and discussed during the Community consultation events carried out in January/February 2014
- Consider ways to ensure that local community initiatives can link into the SOA Local

4.3 A summary of findings relating to each of the highlighted topics can be found in the attached supplementary information, which formed the basis of the discussions at the focus group.

4.4 This information will be used to inform the development of the SOA Local: Helensburgh & Lomond.

4.5 The group also considered a way of including wider community initiatives into the SOA Local: Helensburgh & Lomond. The draft process will be refined during Phase Three of the Action Plan

4.6 Phase 2 of the action plan is now complete.

4.7 Phase 3 will take place during January and February 2015. It will include a working group which will meet on the 15<sup>th</sup> of January 2015 to review the draft SOA Local: Helensburgh & Lomond document and to further consider ways of including wider community initiatives into the SOA Local: Helensburgh & Lomond.

## **5. Conclusions**

5.1 The work of the focus group provided valuable information which will be incorporated into the development of the SOA Local: Helensburgh & Lomond.

5.2 Phase 3 will take forward the development of the SOA Local: Helensburgh & Lomond.

## **6.0 SOA Outcomes**

The report relates to all 6 SOA Outcomes



**Name of Lead Officer**

Lorna Elliott, Community Governance Manager, Argyll & Bute Council  
**Tel:** 01631 567995

**For further information please contact:**

Audrey Baird, Community Development Officer, Argyll & Bute Council  
**Tel:** 01436 658735

**Supplementary Information**

- Summary of Focus Group Findings

DRAFT

This page is intentionally left blank

## SOA Outcome 1: The Economy is diverse and thriving

Topic Highlighted	Short Term Outcome	Code	Action being taken forward regionally	What action is being taken forward at a local level?	Where are the gaps?	Is this issue still relevant and if not, why not?
Marketing and the need to improve promotion of the area	To ensure our towns, villages and rural communities are economically dynamic, sustainable and connected building on their distinct opportunities	1.2.2	Develop a cross sectoral (Private, Public and Third sectors) Action Plan to attract new residents to Helensburgh and Lomond	<ul style="list-style-type: none"> <li>The new local development plan has 950 new houses: 75% commercial/25% affordable.</li> <li>Local events/festivals</li> <li>The Tower/Submarine Museum</li> </ul>	<ul style="list-style-type: none"> <li>Does H&amp;L have the housing to accommodate more people? Need a targeted publicity campaign to builders to ensure they know land is becoming available.</li> </ul>	Yes
	To create the right environment where more people choose to live, work, visit and invest in Argyll and Bute	1.3.1	Raise awareness nationally of the qualities and attractiveness of Argyll and Bute as a location for investing, working, living, studying and visiting	<ul style="list-style-type: none"> <li>Chamber of Commerce delivering significant festivals/events</li> <li>Visit Helensburgh + National Park/Love Loch Lomond both marketing the area</li> </ul>	<ul style="list-style-type: none"> <li>Need a SWAT analysis</li> <li>Dearth of industrial/small business units and identify sites</li> <li>Web page on Council website on sites/land and opportunities in H&amp;L</li> <li>Survey existing businesses about new sites</li> <li>Lack of large modern retail units</li> <li>Analysis of the local population's needs for retail</li> </ul>	Yes
		1.3.3	To deliver new signage / branding for our main gateways to Argyll and Bute (road, rail, ferry and air)		<ul style="list-style-type: none"> <li>Identify H &amp; L's key gateways and promote the area at those gateways</li> </ul>	Yes
Barriers to small business development and the need for support, improved parking, infrastructure and the issue of empty retail units in the town centre	To achieve business growth and additional employment opportunities	1.1.2	Support an increase in international trade through more businesses trading internationally and businesses increasing international turnover <b>NOTE: Should this be a priority for H&amp;L ACPG?</b>	<ul style="list-style-type: none"> <li>Faslane opportunities/links need to be better exploited</li> </ul>	<ul style="list-style-type: none"> <li>Scottish Enterprise to step up to the task</li> <li>Focus on the tourist trade and cruise market</li> </ul>	??
		1.1.4	Support Business Growth (including social enterprise) through HIE / SE account management and Business Gateway (BG)			yes

	To create the right environment where more people choose to live, work, visit and invest in Argyll and Bute	1.3.1	Raise awareness nationally of the qualities and attractiveness of Argyll and Bute as a location for investing, working, living, studying and visiting	<ul style="list-style-type: none"> <li>• Chamber of Commerce delivering significant festivals/events</li> <li>• Visit Helensburgh + National Park/Love Loch Lomond both marketing the area</li> </ul>		yes
	To ensure our towns, villages and rural communities are economically dynamic, sustainable and connected, building on their distinct opportunities	1.2.1	Expand upon recent investment activity in Helensburgh and ensure readiness for the implementation of the Maritime Change Programme	<ul style="list-style-type: none"> <li>• Helensburgh Seafront Development Group (HSDG) seeking support for sandy beach and pier redevelopment project</li> <li>• The key is to get armed forces families living in the area. 2000 additional Faslane staff – MOD</li> <li>• Visit Helensburgh Investment in the Tower</li> </ul>	Revisit BIDS for Helensburgh Need a Town Centre Manager	yes
Employment, with a particular focus on access to jobs, graduate opportunities, tourism and income deprivation	To ensure we have a robust tourism sector with an extended season, a higher value proposition and increased turnover	1.6.1	Secure and maintain ongoing sustainability of the Argyll and Isles Tourism Co-Operative Ltd (AITC) to further develop the tourism value chain linked to the area's unique heritage, provenance and authenticity	<ul style="list-style-type: none"> <li>• Visit Helensburgh run mainly by volunteers</li> </ul>	Make sure tourists know Helensburgh is part of Argyll and not West Dunbartonshire No support from HIE/SE Not a tourist destination -less footfall than Inveraray -nostalgia tourism Redevelopment of Hermitage Park	yes
	To ensure that Argyll and Bute is recognised nationally and internationally as a location for marine education, research and business	1.4.1	Increase awareness of marine employment, education and business opportunities through engagement with the Scottish Association for Marine Science and all local stakeholders	<ul style="list-style-type: none"> <li>• Marine employment on peninsula- Silvers do take on apprenticeships (boat maintenance/sail making)</li> <li>• Leisure sailing and watersports through Helensburgh Sailing Club etc</li> </ul>		yes
		3.2.1	Encourage local apprenticeships and training programmes which align with the demands of the local job market	<ul style="list-style-type: none"> <li>• MoD/Babcock have apprenticeships and are big employer in the area</li> </ul>	Impression is that MoD/Babcock don't support the local economy – they are very self-sufficient. Use local companies eg military meat covenant should work both ways	yes
	Our partners work together to ensure that we mitigate	5.6.7	Adverse impacts of welfare reform are minimised	<ul style="list-style-type: none"> <li>• Helensburgh and Lomond Foodbank opened on 03/11/2014 and the committee is working with a number of</li> </ul>		yes

	against the effects of poverty across Argyll and Bute			local partners		
Land ownership, community buy outs and land release	To optimise our public assets to best facilitate economic growth	2.7.2	Develop policy framework which maximises economic benefits from our surplus land and building assets			
		2.8.1	To develop a marketing strategy to dispose of public sector surplus property and land			
		2.8.3	Ensure that there is sufficient business land available to develop			
Lack of variety and quality of entertainment and leisure						

## SOA Outcome 2: We have infrastructure that supports growth

Topic Highlighted	Short Term Outcome	Code	Action being taken forward regionally	What action is being taken forward at a local level?	Where are the gaps?	Is this still an issue and, if not, why not?
Health care and the need to travel some distance to access some health care services, perception that the area is sandwiched between two healthcare authorities	People are empowered to maintain their independence and are an integral part of their local communities	5.1.1	Continue to shift the balance of care from institutional to community based settings	<ul style="list-style-type: none"> <li>Red Cross run service but at cost to patient</li> <li>AVA have timebank volunteer drivers – no health training, again cost to individual</li> </ul>	Distance to ‘treating’ hospital too far. Vale o Leven no facility for emergency cover. Poor ambulance service – at present stretched. Health Boards need to work together to prioritise need rather than geographic boundaries. Red Cross volunteer drivers do not have any health training	yes
	The transport connectivity across Argyll and Bute is improved	2.1.2	To produce a Local Development Plan Action Programme with a focus on economic growth for Argyll and Bute covering essential services, connectivity including road, integrated transport, rail, ferries, ports, air, active travel, digital technology and grid. CHORD, TIF and Maritime Change Programme.	<ul style="list-style-type: none"> <li>Ferry – Kilcreggan to Greenock, but passenger ferry only and prone to being cancelled in poor weather</li> </ul>	Ambulance no longer based at Garelochhead. Bus and ferry times not joined up. Very reliant on A82 being open in Milton to access the Ferry (Kilcreggan to Greenock)– people coming into work at Coulport/Faslane	yes
Broadband - the slow roll out has an impact on small business growth and inbound mobility	The digital connectivity across Argyll and Bute is improved	2.2.1	Deliver the roll out of high speed next generation broadband		Lack of information about dates BT Openreach needs to be incentivised Mobile signal fine in Helensburgh( No 4G here) but patchy elsewhere – non-existent in Luss	yes
Housing needs, including affordability, location and size of property	To ensure that housing supports future economic success and a	2.4.1	To preserve and expand the supply of good quality housing units across all tenures to enable population growth		No ‘middle market’ homes available No family accommodation	yes

	growing population				for those based at Faslane No one-bedroom houses at all Does ACHA incentivise tenants to downsize?	
		2.4.3	Increase the supply of housing development opportunities within Argyll and Bute	<ul style="list-style-type: none"> <li>See new H&amp;L local plan</li> </ul>		
		2.4.4	Ensure the development planning process supports the development of housing in Argyll and Bute		No big schemes identified – developers not on board	
	People are empowered to maintain their independence and are an integral part of their local communities	5.1.6	Maintain a new build social housing programme including housing for varying needs to enable people to live more independently			yes
Helensburgh town centre was perceived to be 'old fashioned'	To secure a sustainable and vital future for our town centres	2.6.1	To undertake Action Plans for each of our six main town centres	<ul style="list-style-type: none"> <li>CHORD</li> <li>Luss easily accessible</li> </ul>	Need to attract new entrepreneurs Empty shops in towns/villages – Rosneath, Kilcreggan, Cove, Garelochhead and Helensburgh. Big rents for empty shops put tenants off Rosneath trying to get new Co-op	yes
	The transport connectivity across Argyll and Bute is improved	2.1.4	Establish Green Networks in each of our main towns			yes
The need for attractive affordable recreational facilities				<ul style="list-style-type: none"> <li>The Tower</li> <li>Duchess Wood</li> <li>Loch Lomond</li> <li>John Muir Way</li> <li>Three Lochs Way</li> <li>Watersports/Sailing</li> <li>Helensburgh Skatepark now</li> </ul>	Local community volunteers taking action need more support. More support for communities taking the initiative	yes

				established and raising funds to for new equipment		
The need to recognise and safeguard coastal and inland scenic areas						yes



### SOA Outcome 3: Education, skills and training maximises opportunities for all

Lack of opportunities to take forward lifelong learning with lack of local provision and poor broadband connections being highlighted as barriers.	To ensure education and skills training opportunities are aligned to economic development opportunities within Argyll and Bute and nationally	3.6.4	Provide the opportunity for adults to participate in certificated courses across Argyll and Bute	<ul style="list-style-type: none"> <li>Local ABC Adult Learning service</li> </ul>	Broadband letting Adult Learning outreach work down	yes
		3.6.7	Improve the learning and skills needs of people seeking a pathway to employment, education or training	<ul style="list-style-type: none"> <li>Adult Learning Tutor bank</li> </ul>		yes
		3.6.6	Support adults to access learning opportunities and progression so that they gain skills and confidence, with a particular focus on digital literacy	<ul style="list-style-type: none"> <li>Basic certificate courses in IT, literacy, employability, confidence building available</li> </ul>	Limited premises to deliver courses in outreach areas – need reliable wi-fi	yes
	The digital connectivity across Argyll and Bute is improved	2.2.1	Deliver the roll out of high speed next generation broadband			yes
Skills and training needs, including appropriate training provision of locally important sectors such as forestry, engineering, retail, care sector, tourism, support for those returning to work, work experience, apprenticeships and the use of online resources	To ensure education and skills training opportunities are aligned to economic development opportunities within Argyll and Bute and nationally	3.2.1	Improve the alignment of education and training with business requirements and the economic opportunities in Argyll and Bute	<ul style="list-style-type: none"> <li>Scottish Fire &amp; Rescue hope to start a Cadet Scheme, possibly in partnership with Argyll College and Hermitage Academy</li> </ul>	With Faslane/Coulport in the area there should be a focus on training in on engineering etc	yes
		3.2.2	Increase the number of opportunities for work placements for Senior Phase pupils			yes
		3.2.3	Provide new and existing SMEs in Argyll with the opportunity to access business skills workshops to help them develop	<ul style="list-style-type: none"> <li>Business Gateway</li> <li>Totally Local scheme</li> </ul>	Council and other public sector orgs should do more to contract with/work with local businesses and service providers. Public Contracts Scotland training should be marketed better	yes
		3.2.7	Develop a curriculum for Argyll College which is responsive to local needs			yes
		3.2.9	Review college provision for further and higher education in Helensburgh and Lomond			

		3.2.4	Encourage local apprenticeships and training programmes which align with the demands of the local job market	<ul style="list-style-type: none"> <li>Council has started a modern apprenticeship scheme</li> </ul>	Collaborate with local businesses on apprentice schemes	yes
		3.2.5	Increase the number of targeted recruitment and training Community Benefits (e.g. apprenticeships, jobs, leadership training etc)		<p>Needs to be better links between Job Centre and AVA.</p> <p>Signposting (Job Centre Plus) to send unemployed to AVA to volunteer so they don't lose benefits</p> <p>Small businesses need more support to recruit</p> <p>No Business Gateway in H&amp;L area</p> <p>Voluntary orgs provide opportunities for work placements/learning</p>	yes

## SOA Outcome 4: Children and young people have the best possible start

Topic Highlighted	Short Term Outcome	Code	Action being taken forward regionally	What action is being taken forward at a local level?	Where are the gaps?	Is this still an issue and, if not, why not?
Childcare and the lack of after school care				<ul style="list-style-type: none"> <li>• One after-school club which is a SCIO</li> <li>• Basics</li> <li>• Centre 81</li> <li>• Mulbery Bush</li> <li>• Lomond School</li> <li>• Childminders</li> </ul>	No after school care outside Helensburgh? Not enough pre-school places for children Affordability Bring back breakfast and afterschool Clubs	yes
The lack of sports and leisure facilities	To enhance the contribution of our communities to school curricula	3.3.2	Promote opportunities in all our schools for members of the community to contribute to pupil learning	<ul style="list-style-type: none"> <li>• Helensburgh URTV-Academy TV</li> <li>• Police/Fire do presentations/discussions in schools (Hermitage)</li> <li>• ECO schools at all Primary Schools</li> <li>• Strong within National Park boundaries</li> </ul>	Parent volunteers. Lots of scope to build on this.	yes
	To promote volunteering opportunities to young people within Argyll and Bute	3.4.2	Deliver Involvement Training Programme to develop young people's leadership and participation skills.		NOTE: Focus group do not know what this is!!	yes
		3.4.3	Increase the number of young people engaged in volunteering	<ul style="list-style-type: none"> <li>• Saltire Awards – challenges</li> <li>• Lots of opportunities, particularly S4 onwards</li> <li>• Duke of Edinburgh</li> <li>• Helensburgh Round Table</li> </ul>		yes
	All our children have increased opportunities and are encouraged to participate in play, recreation and sport	4.6.1	Work together to ensure that all children and young people have access to a range of sports activities at school <b>and use more volunteers</b>	<ul style="list-style-type: none"> <li>• NHS funded 'Midnight football' supported by Police</li> </ul>	Need to reach out to hard to engage children and families Start children younger on volunteering	yes
4.6.2		Agencies work to ensure that children and young people have opportunities to use the outdoor environment as part of their curriculum	<ul style="list-style-type: none"> <li>• Ardencaple Football Club – big waiting list – development officer to run another set?</li> <li>• Rural areas –forest schools</li> <li>• Lomond School opening outdoor nursery (private)</li> <li>• Lower Clyde Greenspace/Duchess Wood</li> </ul>	Very sports focused, little opportunity for arts Funding should be available to lower costs – prevention No joined up list of opportunities for people	yes	

				<ul style="list-style-type: none"><li>• Helensburgh Rugby Club (200+ children involved)</li></ul>	Use social media more to promote events/ opps	
--	--	--	--	---	---	--

## SOA Outcome 5: People live active, healthier and independent lives

Topic Highlighted	Short Term Outcome	Code	Action being taken forward regionally	What action is being taken forward at a local level?	Where are the gaps?	Is this still an issue and, if not, why not?
Ageing population with a particular emphasis on dementia	People are empowered to maintain their independence and are an integral part of their local communities	5.1.1	Continue to shift the balance of care from institutional to community based settings	<ul style="list-style-type: none"> <li>H &amp; L Carers SCIO – support for carers</li> <li>Great range of supported housing available</li> <li>AVA Befrienders Project</li> <li>Alzheimer’s Scotland and other Third Sector bodies very visible in area</li> </ul>	More awareness of support that is available and reducing stigma	yes
		5.1.2	Promote and develop care and support at home that contributes to preventing avoidable admissions to hospital or residential care	<ul style="list-style-type: none"> <li>Telehealth?</li> </ul>		yes
		5.1.7	Carers are identified, supported and enabled to fulfil their roles	<ul style="list-style-type: none"> <li>H &amp; L Carers SCIO – support for carers</li> <li>Great range of supported housing available</li> <li>AVA Befrienders Project</li> <li>Alzheimer’s Scotland and other Third Sector bodies very visible in area</li> </ul>		yes
	Mental health and wellbeing is improved	5.4.1	Promote and build social networks to improve mental health	<ul style="list-style-type: none"> <li>Adult Learning Silver Surfers</li> <li>Helensburgh Addiction Rehabilitation Team (HART) – substance misuse/mental health.</li> <li>Grey Matters v successful in H&amp;L</li> <li>Lots of local social groups available</li> </ul>	More opportunities for contributing to the Community Out of hours support poor	yes
Young people and healthy lifestyles focussing on healthy eating	Individuals are more physically active	5.2.1	Work in partnership to tackle obesity and diabetes	<ul style="list-style-type: none"> <li>Psychology of parenting project - Partners NHS/AVA, some Primary schools and voluntary organisations eg mum and toddler groups.</li> </ul>	Focus on deprivation – hard to reach groups School nurses employed to tackle obesity	yes
		5.2.2	Improve access and develop more opportunities for people to participate in physical exercise / activity	<ul style="list-style-type: none"> <li>Lots of sports clubs and other possibilities in H &amp; L, particularly for young people</li> <li>Skateboard Park Redevelopment Group</li> </ul>	Work needs to be done on participation levels Cost issue to accessing clubs eg tennis Needs to be a focus on parents and family activities	yes
		5.2.3	Increase accessibility to outdoor environments / green spaces		Cycle track – more tbc	yes

Access to health services focussing on the lack of Accident & Emergency hospital and transport issues	People are empowered to maintain their independence and are an integral part of their local communities	5.1.1	Continue to shift the balance of care from institutional to community based settings	<i>Looked at in Outcome 2</i> <ul style="list-style-type: none"> <li>• Lunch clubs in United Reform Church</li> <li>• There are a number of local Befrienders Projects</li> </ul>		yes
	The transport connectivity across Argyll and Bute is improved	2.1.2	To produce a Local Development Plan Action Programme with a focus on economic growth for Argyll and Bute covering essential services, connectivity including road, integrated transport, rail, ferries, ports, air, active travel, digital technology and grid. CHORD, TIF and Maritime Change Programme.			yes

## SOA Outcome 6: People live in safer and stronger communities

Topic Highlighted	Short Term Outcome	Code	Action being taken forward regionally	What action is being taken forward at a local level?	Where are the gaps?	Is this still an issue and, if not, why not?
Facilities for young people				<i>Covered in Outcome 4 discussion</i>	Need for a 'hanging about' space in Helensburgh More parental involvement required	yes
Local decision making along with the need for community engagement and consultation	Stronger, resilient and more involved communities	6.6.1	Work in partnership and support Community Councils to develop community emergency plans	<ul style="list-style-type: none"> <li>• Cardross has an emergency plan. Rosneath considering.</li> </ul>	Message needs to be clear about what is expected of communities and what statutory authorities will do	yes
Perceived lack of a police presence in the more rural parts of the area				<ul style="list-style-type: none"> <li>• Mobile office</li> <li>• Police on bikes</li> <li>• 'Surgery' in mobile office every week</li> </ul>		yes
Lack of community leaders and volunteers	To promote volunteering opportunities to young people within Argyll and Bute	3.4.2	Deliver Involvement Training Programme to develop young people's leadership and participation skills.		Need more volunteers but regulations put people off. Need support for PVG training etc	yes
		3.4.3	Increase the number of young people engaged in volunteering			yes
	To provide the skills needed for our residents to progress in their working and learning lives enabling them to contribute effectively to our communities	3.6.3	Increase the capacity of community groups	<ul style="list-style-type: none"> <li>• AVA and ABC Community Development service do this locally</li> </ul>		yes
		3.6.7	Provide opportunities for older people to be involved in community projects			yes

This page is intentionally left blank



---

**ARGYLL AND BUTE COUNCIL****HELENSBURGH & LOMOND  
AREA CPG****CUSTOMER SERVICES****9 DECEMBER 2014**

---

---

**ANNUAL COMMUNITY COUNCIL BY-ELECTION**

---

**1.0 EXECUTIVE SUMMARY**

- 1.1 This report provides an update for partners to note on the membership of community councils in Helensburgh & Lomond following the annual community council by-elections.
- 1.2 The 2014 annual by-election has resulted in an increase in membership of 100% of the participating community councils, it has increased the number of community councils with 100% membership from 1 (pre-election) to 2 (post-election) and managed to fill 50% of the vacancies advertised.
- 1.3 The Council has undertaken to provide an annual by-election for community councils to increase their membership levels and formalise any co-option undertaken at an AGM by the community councils.

---

**ARGYLL AND BUTE COUNCIL**

**HELENSBURGH & LOMOND AREA  
CPG**

**CUSTOMER SERVICES**

**9 DECEMBER 2014**

---

**COMMUNITY COUNCIL ANNUAL BY-ELECTION**

---

**2.0 INTRODUCTION**

- 2.1 At present there are 8 established community councils in the Helensburgh & Lomond Area. Each of those 8 community councils were offered opportunity to opt into the 2014 annual community council by-election process in effort to strengthen their membership or otherwise to allow any co-opted members the opportunity to put themselves forward as a candidate in the election.
- 2.2 This report provides partners with information about the annual by-election process and the impact that this has had on membership of community councils.

**3.0 RECOMMENDATIONS**

- 3.1 That the Helensburgh & Lomond Area Community Planning Group note that the 2014 annual by-election has taken place and as a result 16 new community councillors have been elected to 6 different community councils in the area.

**4.0 DETAIL**

- 4.1 Eight community councils in the Helensburgh & Lomond area were offered opportunity to participate in the 2014 annual community council by-election. Of those 8, 1 indicated that they had no vacancies to advertise, 1 did not respond to the offer and 6 opted in to the process seeking to fill a total of 32 vacancies.
- 4.2 The nomination process commenced on 9 October and concluded on 27 October. A total of 16 valid nominations were received and were in respect of the following community councils:
- Rhu & Shandon – 2 candidates for 3 vacancies  
Cove & Kilcreggan – 2 candidates for 7 vacancies  
Rosneath & Clynder – 3 candidates for 8 vacancies  
Luss & Arden – 1 candidate for 1 vacancy  
Helensburgh – 5 candidates for 7 vacancies  
Cardross – 3 candidates for 6 vacancies
- 4.3 From the detail above it can be noted that there will be 6 uncontested elections.

**5.0 CONCLUSION**

- 5.1 A total of 16 candidates will be elected to serve on 6 different community

councils at 11am on 27 November 2014.

- 5.2 The 2014 by-election has been reasonably successful in that it has increased membership in 100% of the community councils participating in the by-election, filled 50% of the vacancies advertised and has increased the number of community councils with 100% membership from 1 to 2.

## **6.0 IMPLICATIONS**

- 6.1 Policy – None, the holding of annual by-elections are consistent with policy
- 6.2 Financial – There is an expense associated with running annual by-elections, particularly when contests arise and this will inevitably put pressure on the election budget.
- 6.3 Legal – None, annual by-elections are required to comply with the Scheme for Establishment of Community Councils.
- 6.4 HR – None, while this creates additional pressure on staff in terms of increased workload, the staffing resource is contained to existing postholders.
- 6.5 Equalities – In accordance with existing election franchise, nominations are only accepted from those over 18 who are resident within the community council boundary. This accords with election rules.
- 6.6 Risk – Contested elections do increase pressure on annual budgets
- 6.7 Customer Service – Elections are advertised on the website, in local papers and community councils also promote within their own area. Nominees can lodge nomination papers at their local service points, by post or by email therefore there should be at no disadvantage due to remoteness.

**Executive Director of Customer Services**

**Policy Lead – Councillor Robin Currie, Community & Culture, and Strategic Housing**

14 November 2014

**For further information contact:** Melissa Stewart, Area Governance Officer, Kilmory, Lochgilphead – Tel. No. 01546 604331

This page is intentionally left blank

Putting Tenants First

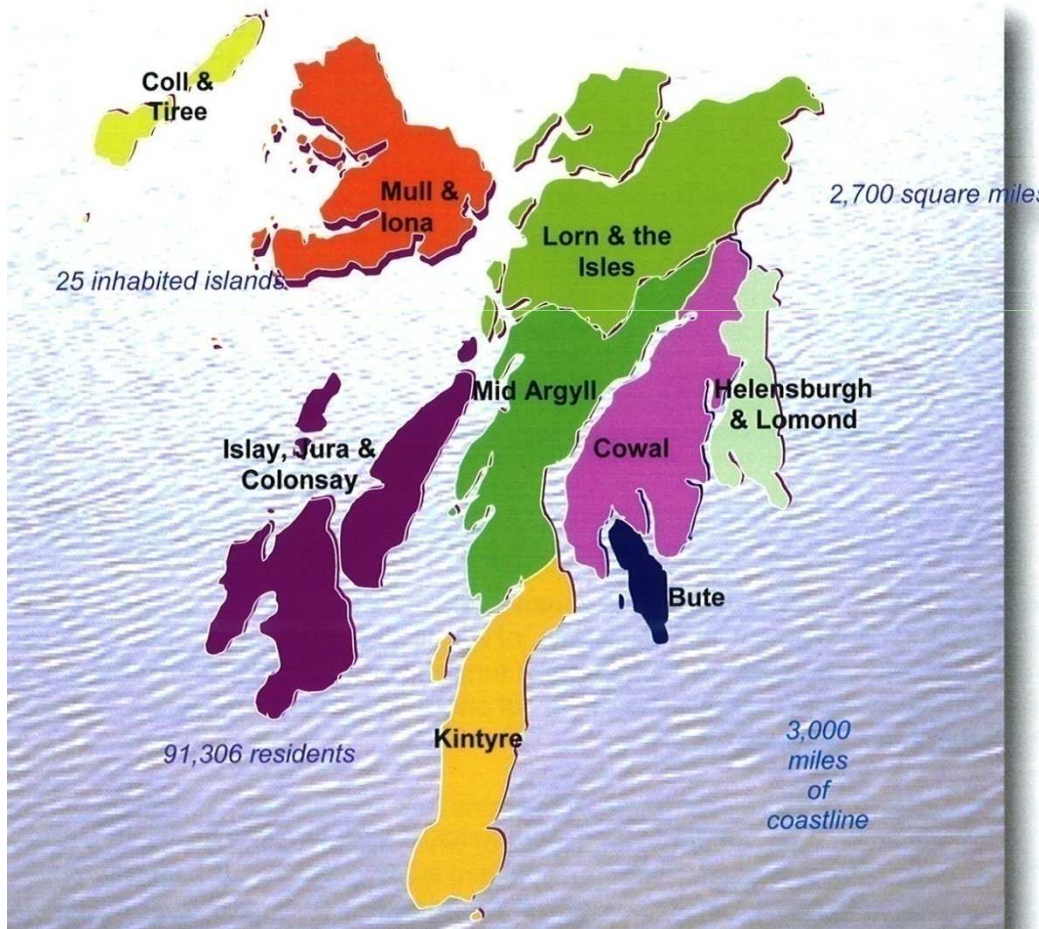


# Update to Lomond Community Planning Group

9<sup>th</sup> December 2014

Yvonne Litster  
**ACHA**  
**Regional Manager**

# Stock Figures for Helensburgh & Lomond



**Lomond –**

**1002 Properties**

**ACHA's Total Stock –**

**5,091 Properties**

## Putting Tenants First



<b>Elements</b>	<b>Helensburgh &amp; Lomond</b>
Windows & Doors	992
Kitchens & Bathrooms	1,801
Heating & Rewire	1,182
Roof & Roughcast	152
Insulation	560
Total Elements	4,687
<b>Total Expenditure in Helensburgh &amp; Lomond to 31<sup>st</sup> March 2014</b>	<b>£13.5 million (ex VAT)</b>

Putting Tenants First



- Roof & Roughcast – Maitland Court





Putting Tenants First



## New Build Programme

- We currently have on site our largest new build programme – 102 units
- The total value of this investment is £13.6million

Putting Tenants First



## New Build Programme

The sites are located across Argyll;

- Oban, 40 units, completed November 2014
- Bonawe, 2 units, completed July 2014
- Tarbert, 8 units, completion January 2015
- Connel, 8 units, completion March 2015
- **Helensburgh, 12 units, completion March 2015**
- Bowmore, 20 units, completion July 2015
- Inveraray, 12 units, completion July 2015

Putting Tenants First



# New Build Programme



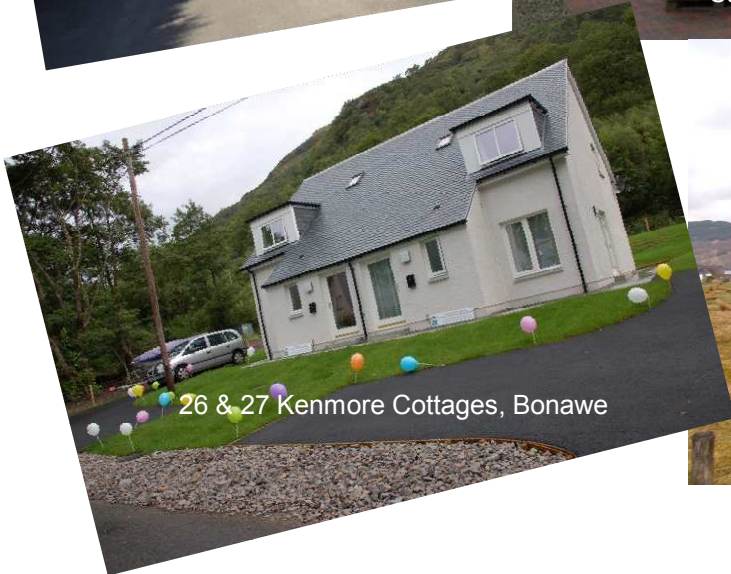
Hood Court,  
Helensburgh



Catalina Avenue, Oban



Site at Bowmore, Islay



26 & 27 Kenmore Cottages, Bonawe



Site at Barn Park, Inveraray



New build development at Connel

# Putting Tenants First



## Duchess Court, Helensburgh



Putting Tenants First



Putting Tenants First



## Other Updates

- **Argyll Homes for All (AHFA)**, the Association's subsidiary has now been delivering a reactive repairs and cyclical maintenance service to ACHA for over a year. Reports on service delivery remain good.
- **Text Messaging**, tenants can find out the balance on their rent account and/or request a call back service to our Customer Service Centre

Putting Tenants First



## Other Updates (continued)

- **Landlord Report** – The Scottish Housing Regulator published Landlord Reports at the end of August 2014. ACHA’s own Landlord report is also available for download
  
- **Tenant Scrutiny – “Your Voice”** – Awareness sessions being run by the Association – opportunity for service users to scrutinise the services we provide and offer suggestions for improvement

Putting Tenants First



## Other Updates (continued)

- The modernised **HOME Argyll** Allocation Policy took effect on 1st October 2014
- Applicants submit an on-line application form
- Applicants are guided through different options to enhance their housing situation



Putting Tenants First



# Questions?

This page is intentionally left blank



# Digital Scotland

## Community Broadband



Highlands and Islands Enterprise  
Iomairt na Gàidhealtachd 's nan Eilean



Why? What? How? Where?



# Why?

## Scotland's World Class 2020 Vision

“an ambition for Scotland to become a world class digital nation and requires that people living, working and visiting Scotland can communicate and connect instantly using *any device, anywhere, anytime.*”



# Why?

“Delivering Next Generation Broadband capability to our most remote and rural communities WILL have a **transformational** impact on how those communities **Live, Learn and Work**”



# What?

## **CBS & Closing The Digital Divide**

- » Helping Communities Who Want To Go –  
Faster and Further
- » Help to Fund Those Communities Who Are Unlikely to Benefit From Digital Scotland Superfast Broadband (120,000 + homes and business premises)
- » Stakeholder and Supplier Engagement to Bring The Benefits of Scale to The Smallest Communities



# What?



CHANGING MINDS • CHANGING LIVES



## COSLA







# How?

We offer Advice, Guidance, & Support with  
Scoping and Demand Stimulation (100%, £2,000)

Technical Options, High Level Design & Business Planning  
(100%)

Capital Funding for Build and Commissioning (up to 89%)

**Funding to Inspire, Design and Build**



# Where?

## **HIE and BT in ARGYLL AND BUTE.**

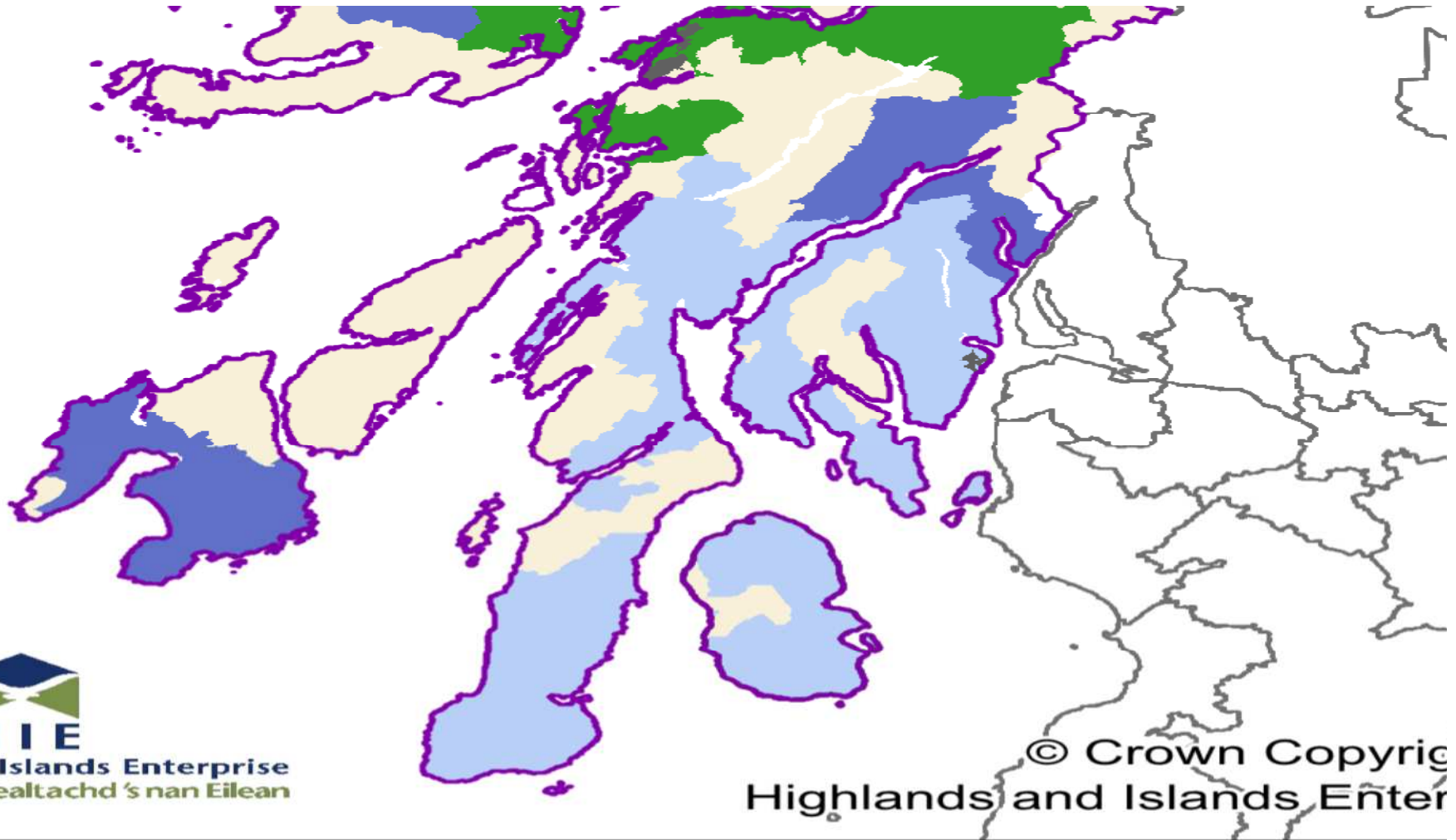
**Oban, Helensburgh, & Dunoon  
– all connecting now or very soon.**

**Coming next – first Quarter 2015.**

Ledaig (Benderloch), Taynuilt,  
Balvicar, Connel, Dalmally, Kilmelford.



# Where?

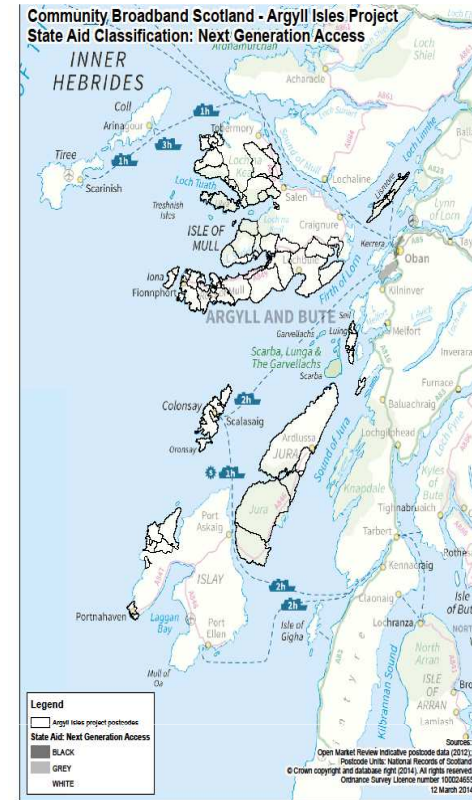




Where?

# CBS and the Community in ARGYLL AND BUTE

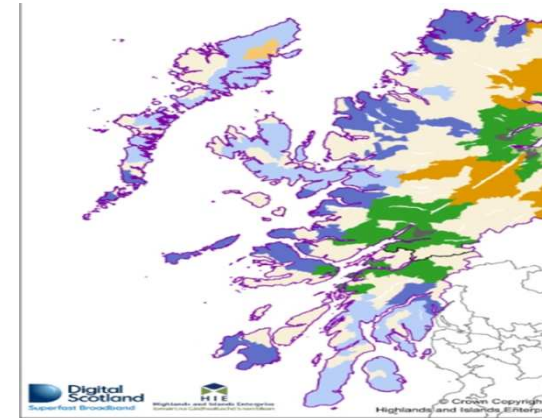
The Isles of  
Mull and Iona,  
Lismore and Luings  
Islay Jura and Colonsay and the Craginish Peninsula.







Where?



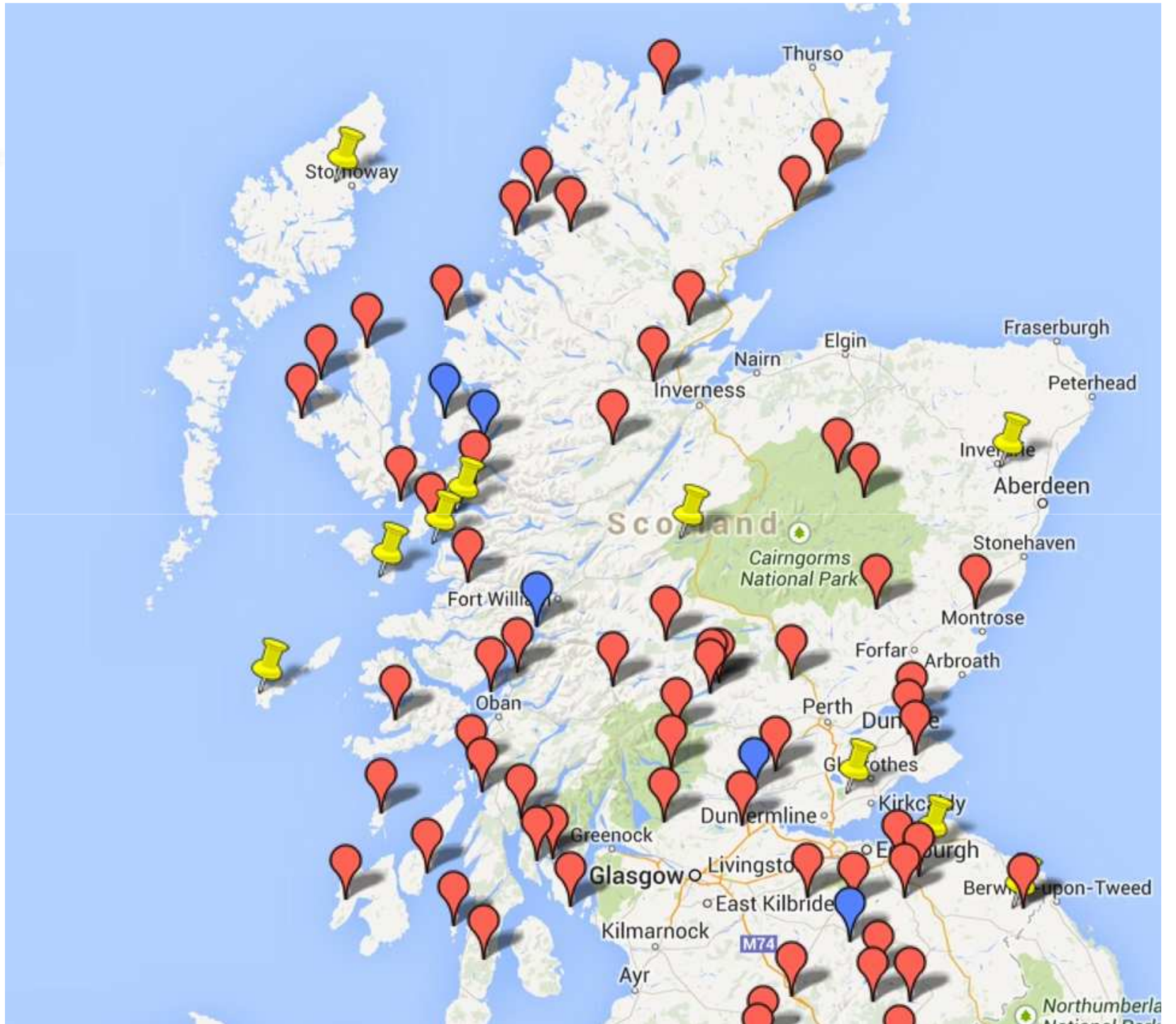
## **CBS and the Community in ARGYLL AND BUTE**

**CBS are engaged with the communities of  
North and South Kintyre, Colintrave & Glendaruel,  
Tighnabruaich, Rural Bute, Loch Awe side, (including  
Portsonachan, Ford and Kilchrenan and Dalmally),  
Bridge of Orchy and Tiree.**



Highlands and Islands Enterprise  
Iomairt na Gàidhealtachd 's nan Eilean









Transforming...

Learn

Work

Live

YouTube



What do You Think?

---

**Argyll and Bute Community Planning  
Partnership**

**Helensburgh and Lomond Area Community  
Planning Group**

**9th December 2014**



---

## **Business Gateway**

---

### **1. Purpose**

Information on Funding sources

### **2. Recommendations**

Read over information and take leaflets for reference.

### **3. Background**

One of Business Gateway's tasks is to signpost clients towards potential funding routes.

### **4. Detail**

There are leaflets on two relatively new sources of loan funding, plus our existing Business Growth Grant for future reference. The main purpose of this is to bring this to the attention of a wider audience and let folk know that it is available when they are speaking to businesses. Any enquiries can come to us initially to discuss in more detail.

**West of Scotland Loan Fund** - <http://www.wslf.co.uk/>

Loan administered by Developing Strathclyde Limited(DSL) (<http://www.dsl-businessfinance.co.uk/>) and now available throughout the Argyll & Bute area which was previously excluded. DSL provide loans of up to £100,000 and are available at a current interest rate of 5%. Security may be required. Some sectors are excluded.

**Start Up Loan** - <http://www.startupfinancescotland.co.uk/>

UK wide programme of loan support for new businesses. Rolled out now across Scotland having been trialled in England. The business must have been trading for less than 12 months and have a viable business proposal, which indicates that the business is capable of repaying any loan. The loan is unsecured (£1,000 - £25,000) with a current interest rate of 6%. The applicant must pass an initial credit check.

**Business Gateway Plus Growth Grant** - <http://www.argyll-bute.gov.uk/business-gateway-plus>

Grant of up to 50% (max £3,000) available to support businesses with growth plans. New businesses must have been trading for at least 3 months and be able to demonstrate anticipated Turnover of £70k in the first 18 months of trading. For existing businesses an annual turnover of £70K is required. In both cases, the grant must be allied to a project which will further increase the business's turnover.

## **5. Conclusions**

### **Name of Lead Officer**

Donald Melville Business Adviser, Business Gateway

**Tel** 01546 604 555

### **For further information please contact:**

Sam Ford, Business Gateway

**Tel** 01546 604 555

**HELENSBURGH AND LOMOND COMMUNITY PLANNING GROUP****TUESDAY, 9<sup>th</sup> December 2014****Loch Lomond and the Trossachs National Park Authority (NPA) – Report**

---

**Local Development Plan –**

LIVE Park is the name for the next Local Development Plan for the National Park. It focused on how Planning can improve the National Park as a place for LIVING, INVESTING, VISITING EXPERIENCING.

After having spoken to communities, landowners, investors and other relevant people, the Forward Planning team published the Main Issues Report, which went out for public consultation from the end of April until early July.

LIVE Park was a chance to really understand the future potential of where you live, work, play and invest. It set out how planning can help improve Loch Lomond & the Trossachs National Park – from housing to jobs, and everything in between.

You can find more information on our website [www.ourLIVEpark.com](http://www.ourLIVEpark.com).

You can follow us at:

[www.facebook.com/ourLIVEpark](http://www.facebook.com/ourLIVEpark)

[www.twitter.com/ourLIVEpark](http://www.twitter.com/ourLIVEpark)

[www.instagram.com/ourLIVEpark](http://www.instagram.com/ourLIVEpark)

Formal feedback was given through our Online Local Development Plan [here](#). The consultation is now closed but plans can still be viewed.

**LIVE Park is now consulting on the Additional Sites following the Main Issues Report Consultation until 19 December 2014. You can find out more at [www.ourlivepark.com](http://www.ourlivepark.com)**

**National Park commended for planning guidance on renewable energy**

Stuart Mearns has just been appointed as head of rural development and planning at Loch Lomond & The Trossachs National Park Authority and was joined by the Park's director of operations, Gordon Watson, and ecologist Gwenda Dick in receiving recognition from the Scottish Government for "ground-breaking" planning guidance in Edinburgh last week. Stuart was appointed to the role of head of rural development and planning after a three-month competitive search. He joined Loch Lomond & The Trossachs National Park Authority as forward planning manager in 2009 and has played a key role in the development of planning policy that supports the Park's responsibilities for rural development, conservation and visitor experience.

The National Park's Supplementary Planning Guidance (SPG) for Renewable Energy was commended in the Development Plans category at the Scottish Awards for Quality in Planning, which is one of the Scottish Government's most prestigious events and celebrate achievements in planning, from strategic visions to development on the ground.

Though formally introduced in 2013, the National Park's SPG for Renewable Energy has been in development since 2011 and represents a significant undertaking by Park planners in conjunction with a range of partners, which has resulted in approval of 36 renewable energy schemes by the National Park, 11 of which are now operational.

The guidance supports the National Park's strategy to support small scale renewable energy development; deliver efficiencies in processing applications and demonstrate to communities and landowners what can be achieved.

Stuart said:

"This is fantastic recognition of all the hard work that went into the development of our guidance for Renewable Energy by a number of staff.

"Renewable energy represents a significant opportunity for the Park's rural economy, so we worked with partners to provide comprehensive guidance that would not only allow communities to benefit but also fulfils our responsibilities to protecting the Park's sensitive landscape.

"I am delighted that the judges decided this was done to an exceptionally high standard and would like to thank everyone involved."

### **Introducing 'Your Park'**

'Your Park' is a programme to enhance the camping experience in Loch Lomond & The Trossachs National Park and to improve our most cherished loch shores. This is a National Park, so it is yours to enjoy and respect regardless of whether you come to our loch shores to camp, to go for a walk, swimming, kayaking or simply to enjoy a picnic. There is a huge variety of activities on offer.

Unfortunately, our most popular and accessible loch shores are suffering from damaging overuse and the irresponsible behaviour of some. This includes irresponsible camping and misuse of laybys including long-term encampments during the summer months. We want to take action in these areas so that we:

- Protect and conserve the area's beauty, habitats and wildlife for future generations
- Ensure a variety of visitors can come and enjoy our loch shores
- Reduce the types of behaviour, damage and pollution that ruins other visitors' and residents' enjoyment
- Deliver a wider range of opportunities to camp across the National Park so visitors are provided with a better camping experience with the right type of facilities
- Provide opportunities for local businesses to flourish
- Ensure that people know how to truly 'wild camp' without leaving a trace of their visit

Through 'Your Park', the National Park aims to provide opportunities for people to camp on our loch shores in well maintained sites, which have the right facilities and where visitor numbers are managed sustainably. We believe that this will allow other visitors to enjoy these popular beauty spots and help protect the environment for future generations to enjoy.

**'Your Park' offers the opportunity to have your say. We want to hear your thoughts on our proposals. The consultation is currently open until Monday 12 January 2015.**

#### **LLTNPA Community Grants Scheme 2014/15**

Grants Monitoring has been taking place over the summer months and good progress is being made with all projects supported in 2013-2014. Feedback continues to support the need for both the capacity building administration grant for community organisations and the 'Soon Seen Successful' project grants. From what communities have been telling us, the administration/development part of the grant as well as the Soon Seen Successful project grants are both still much in demand so we are following similar criteria to the last years programme.

The 2014-2015 Community Grants Scheme was launched in mid October this year with applications to be completed by the end of November. Board members will then evaluate applications and successful communities will be notified by the beginning of 2015.

This page is intentionally left blank



---

**Argyll and Bute Community Planning Partnership****Helensburgh & Lomond Area Community Planning Group****9<sup>th</sup> December 2014****Agenda Item [for office use]**

---



---

**Duchess Wood Local Nature Reserve Committee Update**

---

**1. Purpose**

The purpose of this update is to provide Area Community Planning Group members with bullet point highlights of matters discussed at the Duchess Wood Local Nature Reserve Committee meeting held on the 18<sup>th</sup> of November 2014

**2. Key Points**

- The Committee gave consideration to a proposal to create an attraction in Duchess Wood which would be similar to the existing Enchanted Forest attraction in Pitlochry and agreed to support the 'Fairy Tale Woods' project in principle with further information on the initiative being considered at future meetings
- The Committee received an update from the Education sub group and acknowledged the impact of transportation costs for local primary schools on their already straitened budgets. The Chair emphasised the need to promote Duchess Wood and to encourage local schools to use the Woods. It was agreed to approach local schools via the Head Teachers Cluster meeting with a view to determine how best to promote Duchess Wood
- The committee agreed to support in principle the Lomond School proposal for a Forest School site in Duchess Wood, subject to confirmation from Argyll and Bute Legal Department and Luss Estates.
- The Green Gym programme is expected to run again, from December until March. The Committee were keen to see referrals to this programme from all appropriate medical professionals.

**3. Further Information**

The minutes for the meeting can be found via the following link

<http://www.argyll-bute.gov.uk/moderngov/ieListDocuments.aspx?CId=457&MId=6361&Ver=4>

The date of the next meeting is 17 February 2015

**4.0 SOA Outcomes**

Outcome 1- The economy is diverse and thriving

Outcome 3: Education, skills and training maximises opportunities for all

Outcome 4: Children and young people have the best possible start

Outcome 5: People live active, healthier and independent lives

**Chair**

Cllr Aileen Morton

Aileen.morton@argyll-bute.gov.uk

**For further information please contact:**

Lorna Elliott, Community Governance Manager

**Tel** 01631 567995

---

## Community Planning Group Paper

Submitted 21<sup>st</sup> November 2014

---

### Mental Wellbeing in Argyll and Bute

---

#### 1 BACKGROUND AND SUMMARY

- 1.1 This paper will give a general update regarding local and National mental health and wellbeing issues.
- 1.2 The current local mental health and wellbeing strategic framework is due to come to a conclusion in December. Progress to date on the current local strategic framework has been collated and an extension of this strategic framework was agreed by the Programme Board in August 2014. The supplement is now available to download and will conclude in December 2016. Currently the National Mental Health Strategy is due to finish in 2015 and we expect the new National Strategy to be published in 2016. This explains why we have added a supplement to the current local strategy in order to bring it in line with the release of the new National Strategy. In the meantime, partners should make themselves aware of the content of the local strategy and undertake, monitor and report any actions which contribute to achieving the outcomes within the framework.
- 1.3 A scoping exercise to identify the availability of mental health and wellbeing training provision in Argyll and Bute has been undertaken. Subsequent streams of work have been established to focus in on how training could be provided, delivered and financed in the future. Partners should take note of the difficulties and get involved in finding solutions.

#### 2 RECOMMENDATION

- 2.1
  - 1 Partners are encouraged to read the current Strategic Framework for Mental Wellbeing in Argyll and Bute and the additional supplement (which will be available on NHS Highlands website in Dec 2014), and undertake activities which contribute to achieving the outcomes stated in these documents.
  - 2 Partners should recognise the importance of mental wellbeing in the Single Outcome Agreement and how support to build healthy communities results in healthy people. Every one of us has mental wellbeing and a wide range of stakeholders have a contribution to make in improving it.
  - 3 Partners are encouraged to recognise the impact of preventative approaches in mental wellbeing.
  - 4 Partners should recognise the value of training as a means of supporting staff and communities to prevent mental ill health and support wellbeing. They can support training availability and delivery by providing financial support to partners and staff and by working together to share resources which will enable training to be delivered regularly, locally and cheaply.

### 3 DETAIL

#### 3.1 **Strategic Framework for Mental Health and Wellbeing in Argyll and Bute 2012-14**

The local strategy was written in response to a request by the Mental Health Redesign Implementation Group in 2011. At that time the new National Strategy (Mental Health Strategy for Scotland 2012-15) was in development and the previous Policy and Action Plan Towards a Mentally Flourishing Scotland (TAMFS) had come to the end of its period.

#### 3.2 Sam Campbell the Health Improvement Specialist was tasked with leading on this work and pulled together a small working group of partners to develop the local strategy. For various reasons this piece of work fell off the agenda of the Modernisations Operational Meetings. A significant amount of work has taken place under all five of the adult and later life related areas. There are still opportunities for activities to take place in support of improved mental health and wellbeing with partners support and the supplement to the current strategy will be available on the NHS Highland website in December.

Extending the life of the current strategy will allow work to take place to implement activities within the strategy and provide a stable framework to work towards in a period of transition from the current National Strategy to the next and further as we move towards integration of the Council and NHS. Some amendments will be required as for example, the Choose Life Project funding may not be continued which would result in section 5 'Reducing Suicide and Self Harm' activities being allocated to other partners to take forward.

#### 3.3 "People with mental illnesses represent nearly one half of all the health-related suffering in this country. Within the NHS they represent the greatest areas of unmet need both among adults and children." (How mental health loses out in the NHS. A report by The Centre for Economic Performance's Mental Health Policy Group, June 2012).

Significant evidence shows that mental health influences a broad range of outcomes for individuals and communities (Mental Health, Resilience and Inequalities. Friedli 2010). Mental health problems have increasingly been shown to precede, and be important in the recovery from, physical health problems. For example, the Whitehall Study showed that emotional health, especially negative affect – a general tendency to report 'distress, discomfort, dissatisfaction, and feelings of hopelessness' – predicts the onset of heart disease and poorer recovery from infarcts independently of other risk factors. (1)

Psychological distress is also a risk factor for stroke. (2) For people with a diagnosis of severe mental illness such as depression, the risk of physical illness is high: 46% of people with a mental health problem have a long-term physical health problem such as coronary heart disease or COPD. (3)

Mental illness also increases the risk of cancer, (4) musculoskeletal problems like back pain (5) and psychosomatic problems like irritable bowel

(6) and possibly a range of other diseases. (7) Death rates are also higher in people with mental illness compared to people without mental illness, especially deaths from cardiovascular, respiratory and infectious diseases. (8).

It has been estimated that the Social and economic cost of mental health problems in Scotland amounts to £8.6 billion – 9% of Scotland’s Gross Domestic Product. (Audit Scotland, 2009). Research indicates that in times of economic hardship people’s mental health and wellbeing suffers and suicide rates increase. (NHS Health Scotland, 2011).

“The evidenced ‘poverty-ill health-poverty cycle makes clear that over the individual life-course, poverty is associated with higher prevalence of mental health issues, addictions and early onset of chronic disease as well as impaired early years development and reduced educational attainment. These factors significantly compromise both entry into and sustained participation in the labour market, thus perpetuating the susceptibility to poverty over the life-course and for potentially the next generation”. (The rise of in-work poverty and the changing nature of poverty and work in Scotland: what are the implications for population health? Glasgow Centre for Population Health, Oct 2013).

### **Community Development for Health Improvement**

Mental health is a strategic priority in the Joint Health Improvement Plan and is taken forward in Argyll and Bute in a number of ways, in many cases utilising an assets based approach to community development. This approach is taken forward by the seven Health and Wellbeing Networks who deliver activities which contribute to healthy communities.

#### **3.4 Mental Health Training Provision on Argyll and Bute**

Mental health awareness can form part of a preventative approach to improving mental health and wellbeing in Argyll and Bute as awareness can result in early intervention, which in turn can reduce the likelihood of people going into crisis. Utilising a preventative approach has considerable support. “A cycle of deprivation and low aspiration has been allowed to persist because preventative measures have not been prioritised. It is estimated that as much as 40 per cent of all spending on public services is accounted for by interventions that could have been avoided by prioritising a preventative approach.” (Commission on the Future Delivery of Public Services, Christie 2011).

Both the Scottish Government and Health Scotland promote a preventative approach to Mental Health Policy in Scotland in response to the evidence base. “A small improvement in population wide levels of wellbeing will reduce the prevalence of mental illness, as well as bringing the benefits associated with positive mental health” (Mental Health, Resilience and Inequalities. Friedli 2010).

#### **3.5 Areas of concern identified by the scoping project covered issues such as places on training available, booked and then not used; significant staff**

changes resulting in a lack of trainers being available resulting in reduced availability of many courses. There are gaps in the types of courses available to some groups such as young people and dementia training. Finally, funding for Choose Life is under review with the current funding stream due to finish in March 2015. Discontinuation of this will result and all suicide prevention training ceasing from March 2015.

These issues will have a significant impact upon staff in the NHS, Council and Third sector as some of this training is mandatory for NHS and Council staff. Tightening budgets put availability and delivery of training at risk. For example, courses such as Scotland's Mental Health First Aid are predominantly utilised by the Third Sector with 50% of places going to Third Sector Staff. This course is currently funded entirely by NHS Highlands Public Health budget. Information gathered by the Third Sector work stream identified issues for Voluntary Organisations in funding training courses for staff as most funders including Argyll and Bute Council do not fund training costs within Service Level Agreements thus, making it difficult for organisations to finance their staffs continual professional development and could result in staff lacking important skills and knowledge to support mental health and wellbeing in the communities they work with.

#### **4 CONCLUSION**

- 4.1 Partners are encouraged to undertake actions and activities identified in the Strategic Framework for Mental Wellbeing in Argyll and Bute and familiarise themselves with the supplement which will be available in December 2014.
- 4.2 As part of a preventative measure to improve mental health and wellbeing in Argyll and Bute it is important that training is available to people and staff living and working in the area. This outcome is specified within the current local Mental Health Strategy, the National Mental Health Strategy and the current Single Outcome Agreement (5.4.2-5.4.4) and should be made explicit in Local Area Plans. Ongoing work by Sam Campbell will help to inform the 'best buys' with regards to mental health and wellbeing training courses.

---

**For further information please contact:**

Sam Campbell

Senior Health Improvement Specialist – Mental Health

01436 655076

## ATTACHMENTS

Strategic Framework for Mental Wellbeing in Argyll and Bute 2012-2014.

## REFERENCES

1. Nabi H, Kivimaki M, De Vogli R, Marmot MG, Singh-Manoux A. Positive and negative affect and risk of coronary heart disease: Whitehall II prospective cohort study. *BMJ* 2008; 337:a118. (doi): p. 10.1136/bmj.a118.
2. Surtees P, Wainwright NW, Luben RN, Wareham NJ *et al.* Psychological distress, major depressive disorder, and risk of stroke. *Neurology* 2008; 70(10): 788-94. doi:10.1212/01.wnl.0000304109.18563.81.
3. ) Naylor C, Parsonage M, McDaid D, Knapp M *et al.* Long term conditions and mental health – the cost of co-morbidities. The King's Fund and Centre for Mental Health. 2012.
4. Kroenke CH, Bennett GG, Fuchs C, Giovannucci E *et al.* Depressive symptoms and prospective incidence of colorectal cancer in women. *American Journal of Epidemiology*. 2005; 162: 839-848.
5. Larson SL, Clark MR, Eaton WW. Depressive disorder as a long-term antecedent risk factor for incident back pain: a 13-year follow-up study from Baltimore Epidemiological Catchment Area Sample. *Psychological Medicine*. 2004; 34: 211-219.
6. Ruigomez A, Garcia Rodriguez LA, Panes J. Risk of irritable bowel syndrome after an episode of bacterial gastroenteritis in general practice: influence of comorbidities. *Clinical Gastroenterology & Hepatology*. 2007; 5: 465-469.
7. Prince M, Patel V, Saxena S, Maj M, Maselko J, Phillips MR *et al.* Global mental health 1– no health without mental health. *The Lancet* 2007; 370:859-877. doi:10.1016/S0140-6736(07)61238-0
8. Osborn D. The poor physical health of people with mental illness. *West J Med* 2001; 175(5): 329-32.

This page is intentionally left blank



**Management Committee****Date: 31 October 2014****Agenda Item: 6a**

---

## **Integration of Health & Social Care**

### **1.0 Purpose**

Argyll and Bute Council and NHS Highland are actively planning for the implementation of new arrangements to meet statutory duties and responsibilities that will shape the future delivery of Health and Social Care in Argyll and Bute as outlined within the Public Bodies (Joint Working) (Scotland) Act 2014. This legislation places a duty on Local Authorities and NHS Boards to develop defined arrangements for the integration of Health and Social Care services in their area.

This report provides an update on a previous report submitted on 19<sup>th</sup> August 2014 to CPP Management Committee.

### **2.0 Recommendations**

CPP Management Committee is asked to note the following issues;

- The Interviews for the post of Chief Officer are took place on 7<sup>th</sup> and 8<sup>th</sup> of October 2014. An appointment is imminent.
- 470 staff attended information sessions across Argyll and Bute to find out more about our plans to create a new Health and Social Care Partnership in Argyll and Bute. Sessions were delivered in Cowal, Bute, Helensburgh, Mid Argyll, Kintyre, Oban, Coll, Islay, Tiree and Mull. The feedback from the staff in relation to the sessions was positive. Further sessions are planned for staff in December 2014.
- Engagement and Involvement sessions are currently being finalised in partnership with the Scottish Health Council to have local conversations with small groups of people in localities who have an interest in health and social care during November and December. Sessions are also being planned with staff involved in re-shaping care for older people during the same period to larger audiences across localities.
- A new joint staff partnership forum involving management and Trade Union reps from both NHS and Council is now established. This forum will provide an appropriate setting to discuss issues relating to integration during 2014/15.

- A national Integration Scheme has been devised by Government and Partnerships across Scotland are advised to use the draft Scheme to ensure compliance with the requirements of the Regulations. The Scheme needs to be submitted to Scottish Government by Mid-February 2014.
- The Shadow Integration Board met for the first time on 10<sup>th</sup> September to oversee the recruitment of the Chief Officer post and start to ensure the work of the Programme Board and joint project team produces the outputs required to set up the new partnership arrangements.
- The Shadow Integration Board will not have any legal powers until the 1<sup>st</sup> April 2015 which is in line with the regulations and guidance associated with the Act. Councillor Dougie Philand was appointed Chair and Robin Creelman was appointed Vic-Chair of the Shadow Integration Board on the 10<sup>th</sup> September 2014.
- It has been agreed by the Shadow Board that the four current administrative areas of Cowal and Bute, Helensburgh and Lomond, Mid-Argyll and Kintyre and Oban Lorn and the Isles are the designated Localities in terms of the requirements of the legislation.

### **3.0 Background**

The Integration Programme Board have been meeting regularly to oversee the work of a joint project team charged with taking forward the preparatory work to deliver the new Health and Social Care Partnership. The project team are currently working on 11 work streams covering specific areas which include HR, Finance, Performance, Quality, Operations, OD, Property, Commissioning, IT, Communication and Support Services.

### **4.0 Detail**

The scope of services to be delegated to the new Health and Social Care Partnership was endorsed by the Council and NHS Highland at their respective meetings in June 2014.

The move towards the creation of the new Health and Social Care Partnership is making good progress as work continues on the submission of our draft Integration Scheme to the Scottish Government by Mid-February 2015. Once approved the Integration Scheme will describe the strategic and operational framework within the body corporate delivery model which meets the statutory requirements of the Public Bodies (Joint Working) (Scotland) Act 2014. The Shadow Board will then be granted the power to form the new Integration Joint Board which will have the legal powers to oversee the strategic and operational duties and responsibilities of the new Health and Social Care Partnership.

## 5.0 Conclusions

Argyll and Bute Council and NHS Highland are working towards the implementation of a new Health and Social Care Partnership which will deliver improved outcomes and more integrated services for people across Argyll and Bute by the 1<sup>st</sup> April 2015.

The Partnership needs to meet new duties and responsibilities as detailed in the Public Bodies (Joint Working) (Scotland) Act 2014 Regulations and Guidance. The new Health and Care Partnership will develop its links with the CPP and build effective joint working arrangements which ensure delivery of improved outcomes for people across Argyll and Bute.

## 6.0 Implications

Strategic Implications	SHORT TERM OUTCOME 5.5 We have accessible high quality services which improve quality of life and wellbeing.
Consultations	A full programme of staff and community engagement is being finalised to meet statutory requirements of the legislation.
Resources	The budget for the new Health and Social care partnership is currently being assessed and agreed. It is expected to be in excess of over £200million.
Prevention	Yes. The growing older population and on-going health inequalities can only be tackled by the integration of budgets to agree on strategic and operational priorities during the next 20/30 years.
Equalities	This will ensure access to a range of health and social care support is available to people living in Argyll and Bute.

**Allen Stevenson**  
**Joint Project Manager-Integration**  
**Lead Officer – Outcome 5**

For more information contact: Allen Stevenson  
 Telephone number: 01369 708513

This page is intentionally left blank